

**BRETON**



CAMA  
**NEW PAOLA**

COLEÇÃO FRANÇA



LOW



CLASSIC



STAGE



CURVED



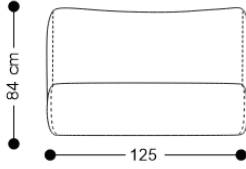
ROA

CAMA  
**NEW PAOLA**

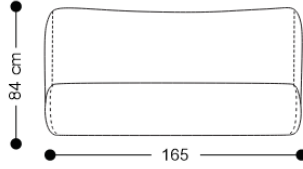
**BRETON**

# CAMA

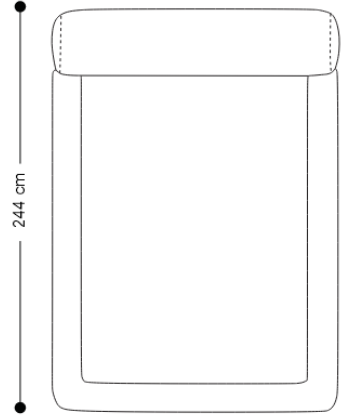
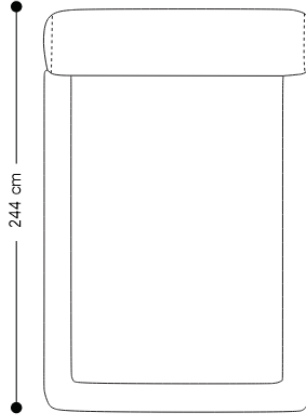
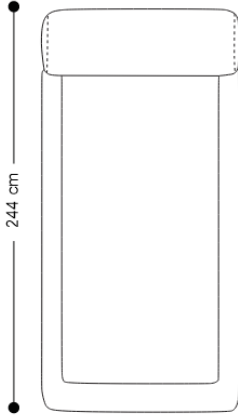
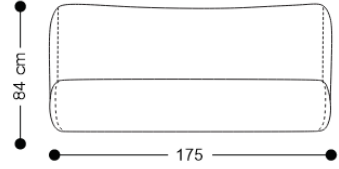
CAMA SOLTEIRO



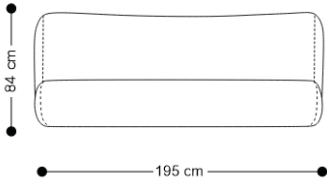
CAMA VIUVA



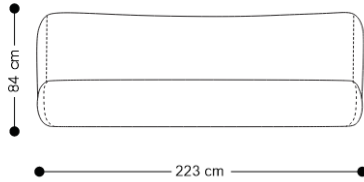
CAMA CASAL



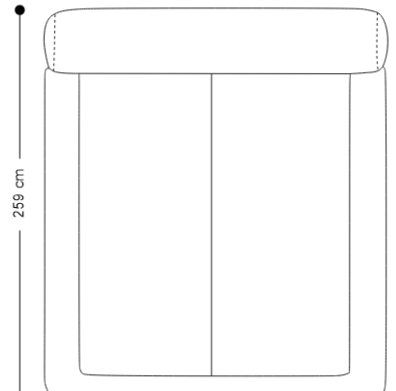
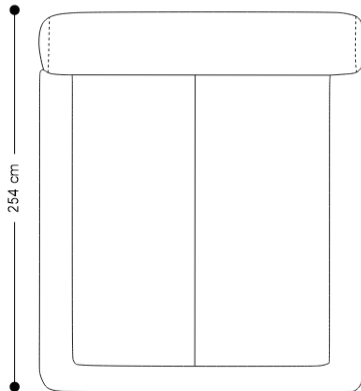
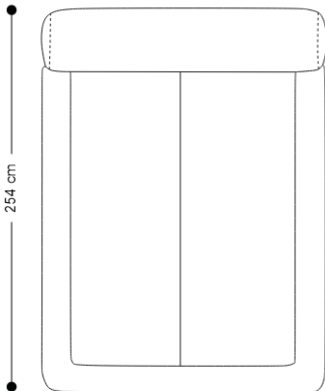
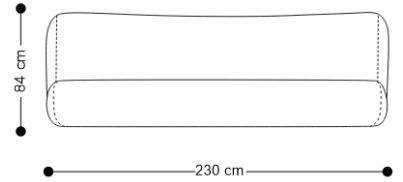
CAMA QUEEN

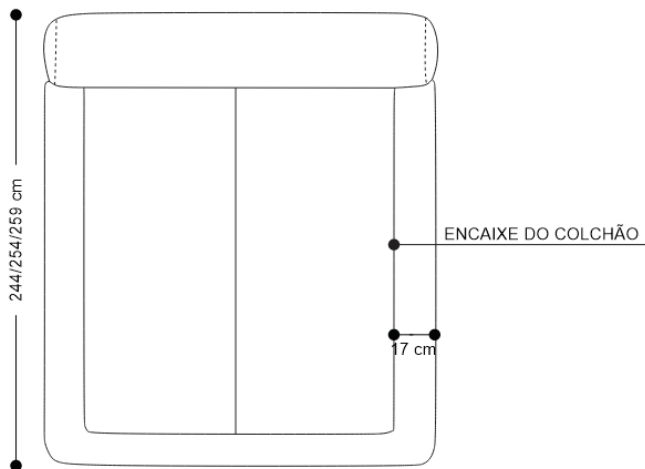
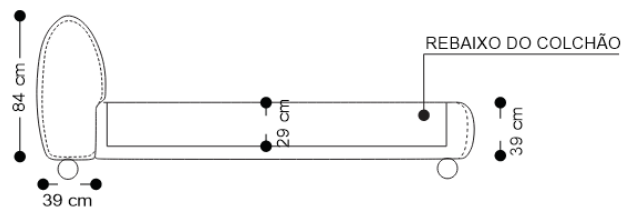
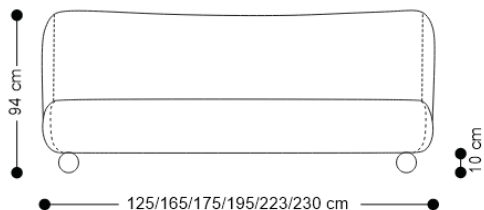


CAMA KING



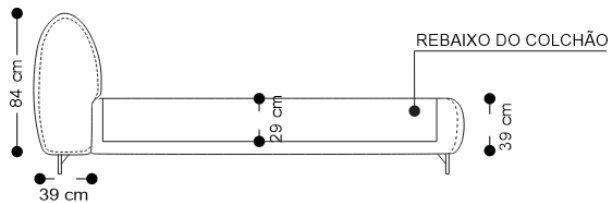
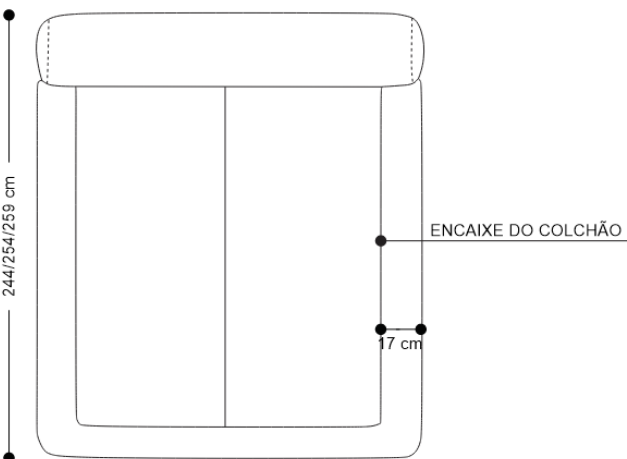
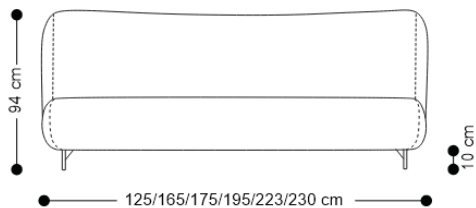
CAMA SUPER KING





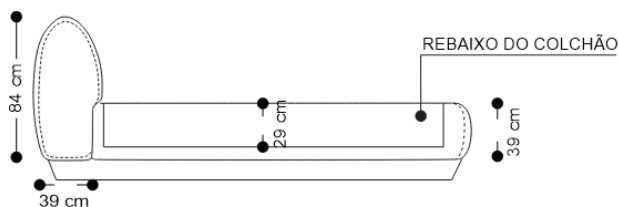
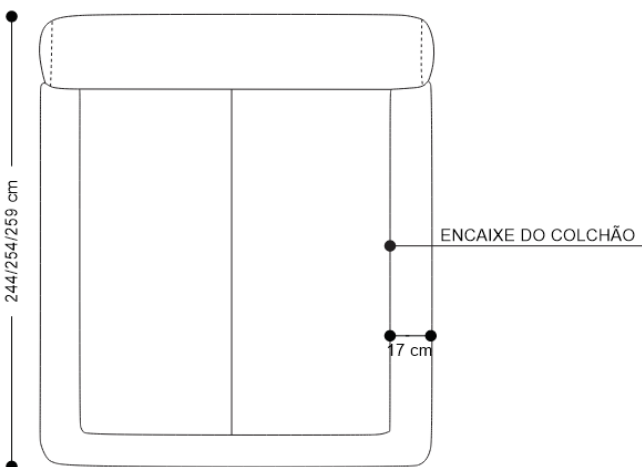
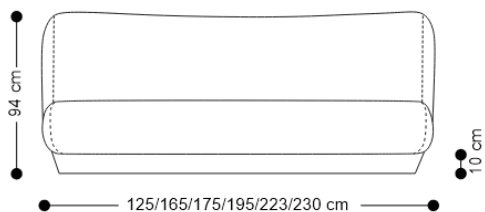
#### DESCRIPTIVO TAMANHOS

- Cama para colchão Solteiro (0,88x1,88) - **1,25L x 2,44P x 0,84A**
- Cama para colchão Casal Viuva (1,28x1,88) - **1,65L x 2,44P x 0,84A**
- Cama para colchão Casal (1,38x1,88) - **1,75L x 2,44P x 0,84A**
- Cama para colchão Queen Size (1,58x1,98) - **1,95L x 2,54P x 0,84A**
- Cama para colchão King Size (1,86x1,98) - **2,23L x 2,54P x 0,84A**
- Cama para colchão Super King Size (1,93x2,03) - **2,30L x 2,59P x 0,84A**



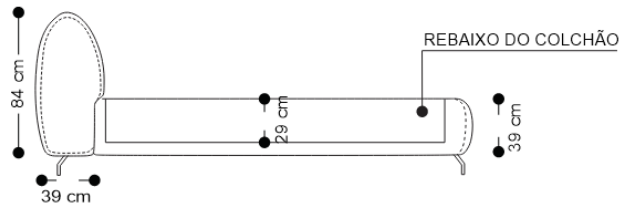
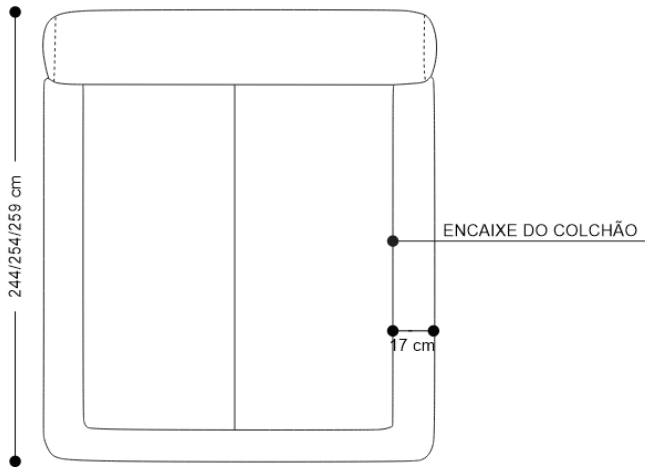
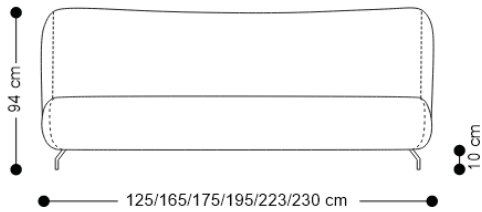
DESCRITIVO TAMANHOS

- Cama para colchão Solteiro (0,88x1,88) - **1,25L x 2,44P x 0,84A**
- Cama para colchão Casal Viuva (1,28x1,88) - **1,65L x 2,44P x 0,84A**
- Cama para colchão Casal (1,38x1,88) - **1,75L x 2,44P x 0,84A**
- Cama para colchão Queen Size (1,58x1,98) - **1,95L x 2,54P x 0,84A**
- Cama para colchão King Size (1,86x1,98) - **2,23L x 2,54P x 0,84A**
- Cama para colchão Super King Size (1,93x2,03) - **2,30L x 2,59P x 0,84A**



#### DESCRIPTIVO TAMANHOS

- Cama para colchão Solteiro (0,88x1,88) - **1,25L x 2,44P x 0,84A**
- Cama para colchão Casal Viuva (1,28x1,88) - **1,65L x 2,44P x 0,84A**
- Cama para colchão Casal (1,38x1,88) - **1,75L x 2,44P x 0,84A**
- Cama para colchão Queen Size (1,58x1,98) - **1,95L x 2,54P x 0,84A**
- Cama para colchão King Size (1,86x1,98) - **2,23L x 2,54P x 0,84A**
- Cama para colchão Super King Size (1,93x2,03) - **2,30L x 2,59P x 0,84A**

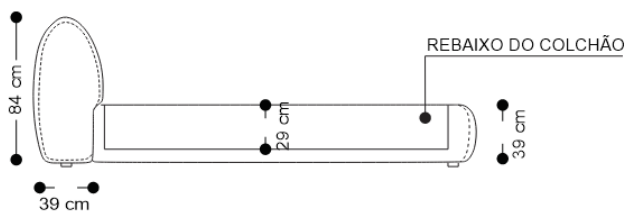
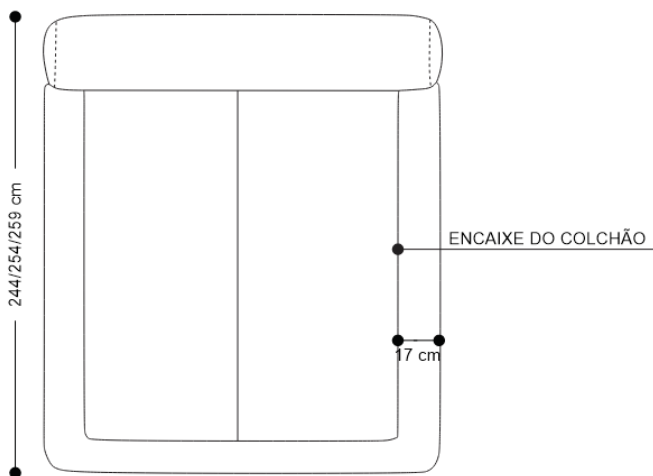
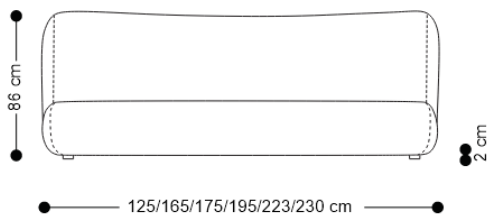


#### DESCRITIVO TAMANHOS

- Cama para colchão Solteiro (0,88x1,88) - **1,25L x 2,44P x 0,84A**
- Cama para colchão Casal Viuva (1,28x1,88) - **1,65L x 2,44P x 0,84A**
- Cama para colchão Casal (1,38x1,88) - **1,75L x 2,44P x 0,84A**
- Cama para colchão Queen Size (1,58x1,98) - **1,95L x 2,54P x 0,84A**
- Cama para colchão King Size (1,86x1,98) - **2,23L x 2,54P x 0,84A**
- Cama para colchão Super King Size (1,93x2,03) - **2,30L x 2,59P x 0,84A**

CAMA  
**NEW PAOLA CURVED**

**BRETON**



#### DESCRIPTIVO TAMANHOS

- Cama para colchão Solteiro (0,88x1,88) - **1,25L x 2,44P x 0,84A**
- Cama para colchão Casal Viuva (1,28x1,88) - **1,65L x 2,44P x 0,84A**
- Cama para colchão Casal (1,38x1,88) - **1,75L x 2,44P x 0,84A**
- Cama para colchão Queen Size (1,58x1,98) - **1,95L x 2,54P x 0,84A**
- Cama para colchão King Size (1,86x1,98) - **2,23L x 2,54P x 0,84A**
- Cama para colchão Super King Size (1,93x2,03) - **2,30L x 2,59P x 0,84A**


## Diferenciais:

- Cama com colchão embutido em base. Possui altura de 29cm interno para encaixe de colchão;
- A base e a cabeceira apresentam cantos arredondados e formas fluidas, criando um visual coeso, suave e moderno. Essa estética remete a tendências atuais que valorizam formas orgânicas e acolhedoras;
- Cinco opções distintas de design dos pés, proporcionando uma mudança de produto em cada escolha.




**NEW PAOLA**


**BRETON**

 Estrutura em madeira de reflorestamento com controle de umidade e compensado naval, com percinta na cabeceira para maior conforto, revestida em espuma de polipropileno D18, D26 e manta acrílica. Modelos LOW, STAGE e CLASSIC com base/pés em madeira; Modelos CURVED e ROA com pés metálicos.

Medidas podem apresentar leves variações. Nos reservamos o direito de efetuar essas alterações sem consulta prévia.

 Reforested wood structure with moisture control and marine plywood, featuring a headboard strap for enhanced comfort, covered with D18 and D26 polypropylene foam and acrylic batting. LOW, STAGE, and CLASSIC models have wooden base/legs; CURVED and ROA models come with metal legs.

Measurements may vary slightly. We reserve the right to make these changes without prior consultation.

 Estructura de madera reforestada con control de humedad y contrachapado naval, con cinta en la cabecera para mayor confort, revestida con espuma de polipropileno D18, D26 y manta acrílica. Modelos LOW, STAGE y CLASSIC con base/patas de madera; modelos CURVED y ROA con patas metálicas.

Las medidas pueden variar ligeramente. Nos reservamos el derecho de realizar estos cambios. sin consulta previa.